

ULTRA-HIGH ISOLATION POWER SOLUTION



MOTIEN TECHNOLOGY 10W + 20W +30W 高絶縁耐压新製品
DC/DC コンバータ **NC10HW& ND-20HW& NJ30HW**



NC10HW-10W

24 Pin DIL



ND20HW-20W

1.6"x1"パッケージ



NJ30HW-30W

2"x1"パッケージ

Awesome Features

高絶縁耐压

I/O 絶縁耐压 : 5000VAC
定格絶縁動作電圧 : 250Vrms

4:1ワイドレンジ入力

NC10HW: 4.5 ~18 / 9~36 / 18~75Vdc
ND20HW / NJ30HW: 9~36 / 18~75Vdc

動作温度範囲

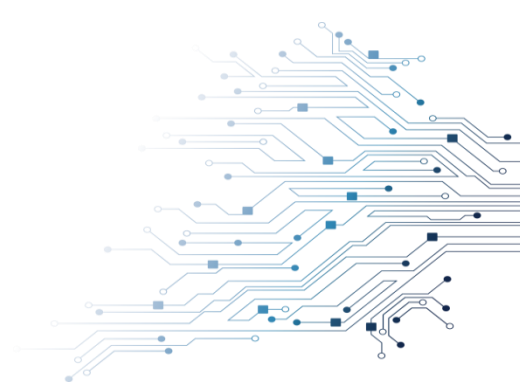
-40 °C ~ +100 °C (Derating)



MOTIEN TECHNOLOGY CO., LTD.

[Http://www.motien.com.tw](http://www.motien.com.tw) [Http://www.motien-power.asia](http://www.motien-power.asia)





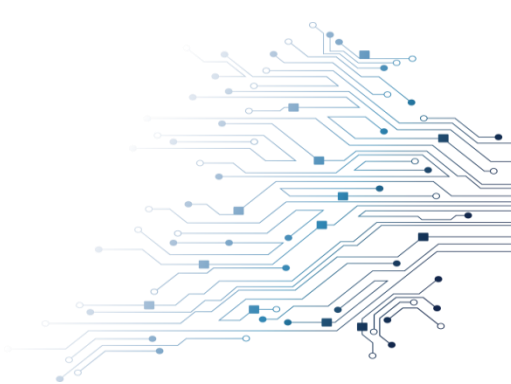
> 製品特性:

- ✓ 10W 単出力・2 出力/ DIP24 パッケージ
- ✓ 4:1ワイドレンジ入力
- ✓ 絶縁耐圧: 5000VAC
- ✓ 定格絶縁動作電圧: 250Vrms
- ✓ 最大効率: 89%
- ✓ 連続短絡保護
- ✓ 動作温度範囲: -40°C~+100 °C
- ✓ UL/cUL/IEC/EN 62368-1 安全認証
- ✓ 低電圧/過負荷/過電圧保護

> 既存製品との規格比較:

	Motien - NC10HW	Motien - VU-10W	Motien - VV-10W
Package	DIP24		
Pinout compatibility	Incompatible		
Output Power	10 W	7.5~10 W	8.91~10 W
Efficiency	84.5 %, min.	81 %, min.	87 %, min.
Short Circuit Protection	Yes	Yes	Yes
Max. Capacitive Load	3300 μ F	2200 μ F	1330 μ F
Isolation Voltage (input / output)	5000 VAC	1500 VDC	1600 VDC
Isolation Capacitance	17 pF, typ.	1000 pF, typ.	1500 pF, typ.
Leakage Current	2 μ A, typ.	-	-
Working Voltage	250 Vrms	-	-
Clearance/Creepage	8 mm, min.	-	-
Max. Case Temperature	105 °C	100 °C	105 °C
Operating Temperature (For Full Load)	-40 ~ 82 °C	-40 ~ 78 °C	-40 ~ 79 °C
Under Voltage Lockout	Yes	No	No
Remote ON/OFF	Yes	No	Yes
Trim	Yes	No	No
Over Current Protection	Yes	Yes	Yes
Over Voltage Protection	Yes	No	Yes
Safety Approval	IEC / EN / UL 62368-1 (Reinforced Insulation)	IEC / EN / UL 62368-1 (Functional Insulation)	IEC / EN / UL 62368-1 (Functional Insulation)





> 製品特性:

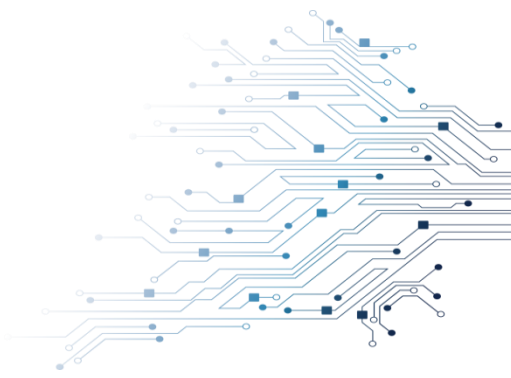
- ✓ 20W 単出力・2 出力/ 1.6"x1"パッケージ
- ✓ 連続短絡保護
- ✓ 4:1ワイドレンジ入力
- ✓ 動作温度範囲：-40°C~+100 °C
- ✓ 絶縁耐圧：5000VAC
- ✓ UL/cUL/IEC/EN 62368-1 安全認証
- ✓ 定格絶縁動作電圧：250Vrms
- ✓ 低電圧/過負荷/過電圧/過温度保護
- ✓ 最大効率：90%

> 既存製品との規格比較:

	Motien - ND20HW	Motien - M9-20W
Package	1.6" x 1"	
Pinout compatibility	Incompatible	
Output Power	20 W	20 W
Efficiency	86 %, min.	85.5 %, min.
Short Circuit Protection	Yes	Yes
Max. Capacitive Load	5000 μ F	10000 μ F
Isolation Voltage (input / output)	5000 VAC	3000 VDC
Isolation Capacitance	17pF, typ.	2000pF, typ.
Leakage Current	2 μ A, typ.	-
Working Voltage	250 Vrms	
Clearance/Creepage	8 mm, min.	-
Max. Case Temperature	105°C	105°C
Operating Temperature (For Full Load)	-40 ~ 70°C	-40 ~ 66°C
Under Voltage Lockout	Yes	Yes
Remote ON/OFF	Yes	Yes
Trim	Yes	Yes
Over Current Protection	Yes	Yes
Over Voltage Protection	Yes	Yes
Safety Approval	IEC / EN / UL 62368-1 (Reinforced Insulation)	IEC / EN / UL 62368-1 (Functional Insulation)



NJ30HW-30W Series



> 製品特性:

- ✓ 30W 単出力・2 出力/ 2"x1"パッケージ
- ✓ 4:1ワイドレンジ入力
- ✓ 絶縁耐圧: 5000VAC
- ✓ 定格絶縁動作電圧: 250Vrms
- ✓ 最大効率: 89%
- ✓ 連続短絡保護
- ✓ 動作温度範囲: -40°C~+100 °C
- ✓ UL/cUL/IEC/EN 62368-1 安全認証
- ✓ 低電圧/過負荷/過電圧/過温度保護

> 既存製品との規格比較:

	Motien- NJ30HW	Motien -VTW-30W
Package	2" X 1"	
Pinout compatibility	compatible	
Output Power	30 W	30 W
Efficiency	84 ~ 89 %, typ.	86 ~91 %
Short Circuit Protection	Yes	Yes
Max. Capacitive Load	7200 µF	20000 µF
Isolation Voltage (input / output)	5000 VAC	1600 VDC
Isolation Capacitance	20pF, typ.	1500pF, typ.
Leakage Current	2 µA, typ.	--
Working Voltage	250 Vrms	--
Clearance/Creepage	8 mm, min.	--
Max. Case Temperature	105°C	105°C
Operating Temperature (For Full Load)	-40 ~100°C	-40 ~ 75°C
Under Voltage Lockout	Yes	Yes
Remote ON/OFF	Yes	Yes
Trim	Yes	Yes
Over Current Protection	Yes	Yes
Over Voltage Protection	Yes	Yes
Safety Approval	IEC / EN / UL 62368-1 (Reinforced Insulation)	IEC / EN / UL 62368-1 (Functional Insulation)

